



CORK
ELITE
PRO

We are
Manufactures
US & Canada



SPRAY
CORK

GALLERY **CORK ELITE PRO**



Roofs



Wood



Brick



Stucco



Commercial Buildings



Special Jobs

Trails and wagons interiors



WHAT IS SPRAY CORK

Spray Cork is a patented eco-coating system for buildings that protects them from the weather and will prevent degradation from environmental factors, manufactured with natural cork, styrene-acrylic resins in water-base, and other additives.

Thanks to its mechanical and water-resistant properties, it reduces the formation of cracks, highlighting its elasticity, high resistance to atmospheric agents and good adhesion to materials such as stucco, concrete, gypsum, cement, brick, etc.



CORK ELITE PRO PROPERTIES



provides exceptional thermal insulation due to its unique properties. Its natural cork composition creates a barrier against temperature transfer, keeping interiors cooler in summer and warmer in winter. Tested according to UNE-EN 12667 standards, our product achieved an impressive result of 0.075 W/m.°C, showcasing its high insulation capability. This means it effectively minimizes heat loss or gain, enhancing energy efficiency and comfort.



Cork spray is highly fire-resistant due to its natural properties. Made from cork granules, it forms a protective barrier against flames, preventing the spread of fire. Its unique composition makes it resistant to ignition, reducing the risk of fire damage. Cork spray undergoes rigorous testing to ensure compliance with fire safety standards, providing peace of mind in residential, commercial, and industrial settings.



Its inherently water-resistant, forming a protective barrier against water penetration. Its unique formula repels water, preventing moisture damage and deterioration. Tested under rigorous conditions, it withstands exposure to water, making it suitable for both interior and exterior applications. Whether applied to walls, or facades, it provides long-lasting protection against rain, humidity, and water splashes.



Offers exceptional breathability, allowing moisture vapor to escape while maintaining a balanced environment. Its porous structure promotes airflow, preventing condensation buildup and mold growth. Tested for breathability, it ensures a healthy living space by regulating humidity levels and improving indoor air quality. Whether used on walls or facades, Cork Spray promotes comfort and longevity by letting buildings "breathe," reducing the risk of moisture-related issues and enhancing overall structural integrity.



Exhibits remarkable flexibility, as demonstrated by its tensile strength and elongation at break test results of 0.36 MPa according to EN-ISO 527-4. This flexibility allows it to adapt to substrate movement, preventing cracks and ensuring long-lasting durability. Whether applied to curved surfaces or facades, Cork Spray maintains its integrity, providing a resilient coating that withstands structural stresses while retaining its aesthetic appeal.



Offers excellent sound absorption capabilities, providing a quieter and more comfortable environment. Tested according to EN ISO 354:2004 standards, our product achieved an impressive result of $\alpha_w=0.10$. This means it effectively absorbs sound waves, reducing reverberation and noise levels in various spaces. Cork spray's porous structure traps sound energy, making it ideal for acoustic insulation in homes, offices, and public buildings.



offering a sustainable solution for construction and renovation projects. Made from natural cork harvested from renewable cork oak trees, it is biodegradable and low in environmental impact. Its application releases no harmful chemicals into the environment, ensuring indoor air quality. Cork spray also enhances energy efficiency, reducing the carbon footprint of buildings. Embrace eco-conscious practices with Cork spray, promoting a greener, healthier planet for future generations.

CORK ELITE PRO PRODUCTS

Within our Cork range you will find
2 different thicknesses: **Fine and Medium**
All available in 58 colours.

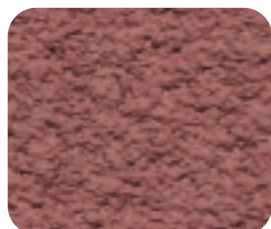
100 BRICK



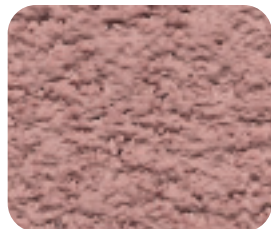
TR BRICK
960 gr



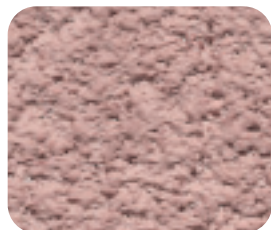
MD BRICK
960 gr



WH BRICK
960 gr



WH BRICK
240 gr



WH BRICK
120 gr



WH BRICK
60 gr



WH BRICK
30 gr

100 GREEN



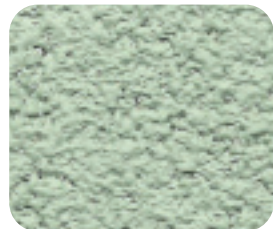
TR GREEN
960 gr



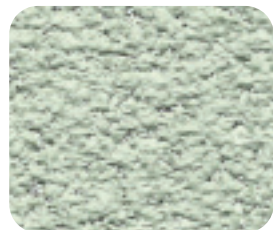
MD GREEN
960 gr



WH GREEN
960 gr



WH GREEN
240 gr



WH GREEN
120 gr



WH GREEN
60 gr



WH GREEN
30 gr

100 OLIVE



TR OLIVE
960 gr



MD OLIVE
960 gr



WH OLIVE
960 gr



WH OLIVE
240 gr



WH OLIVE
120 gr



WH OLIVE
60 gr



WH OLIVE
30 gr

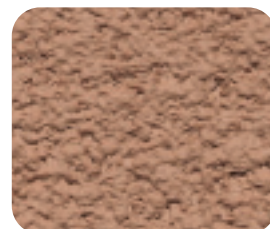
100 OCHRE



TR OCHRE
960 gr



MD OCHRE
960 gr



WH OCHRE
960 gr



WH OCHRE
240 gr



WH OCHRE
120 gr



WH OCHRE
60 gr



WH OCHRE
30 gr

WHITE
BASE
WH

MEDIUM
BASE
MD

TRADITIONAL
BASE
TR

OUR COLOURS

CORK
ELITE
PRO



100 CORK



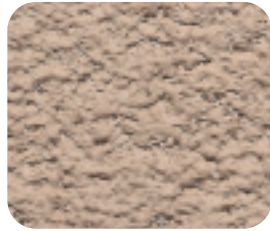
TR CORK
960 gr



MD CORK
960 gr



WH CORK
960 gr



WH CORK
240 gr



WH CORK
120 gr



WH CORK
60 gr



WH CORK
30 gr

100 BROWN



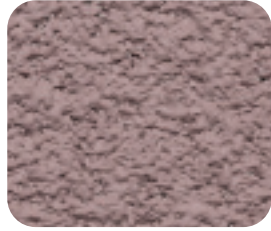
TR BROWN
960 gr



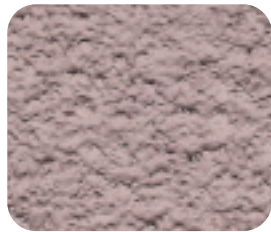
MD BROWN
960 gr



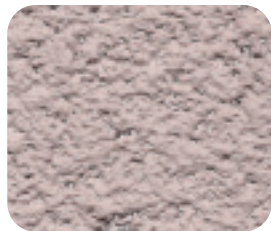
WH BROWN
960 gr



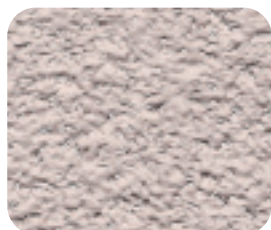
WH BROWN
240 gr



WH BROWN
120 gr



WH BROWN
60 gr

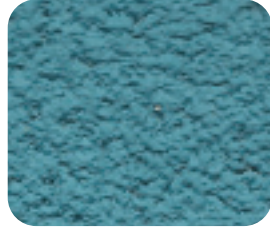


WH BROWN
30 gr

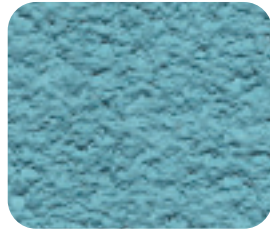
100 BLUE



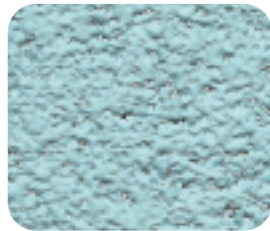
TR BLUE
960 gr



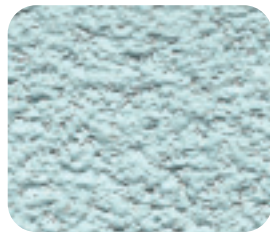
MD BLUE
960 gr



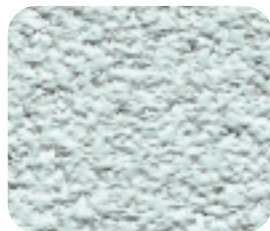
WH BLUE
960 gr



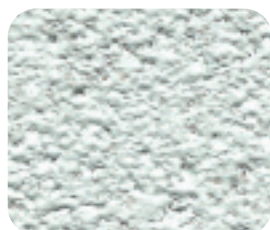
WH BLUE
240 gr



WH BLUE
120 gr



WH BLUE
60 gr



WH BLUE
30 gr

100 BLACK



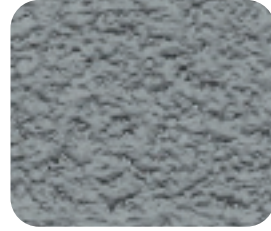
TR BLACK
960 gr



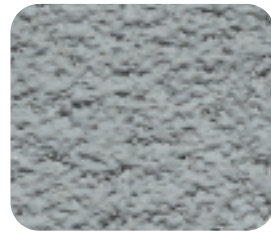
MD BLACK
960 gr



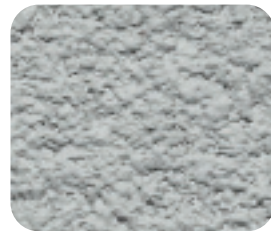
WH BLACK
960 gr



WH BLACK
240 gr



WH BLACK
120 gr

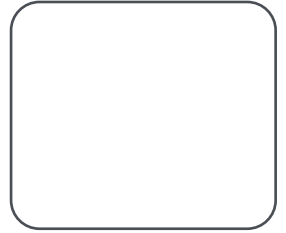


WH BLACK
60 gr



WH BLACK
30 gr

100 WHITE



WH WHITE
Base



Use our Traditional
Natural **Cork Base**.



If necessary, add
the **MD Base** or
the **WH Base**
according to the
selected color.

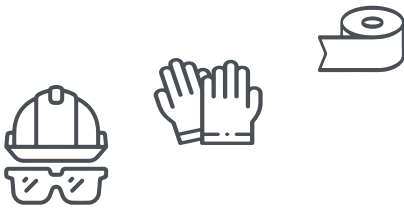


Incorporate the
required Inker:
**960 gr, 240 gr, 120
gr, 60 gr, 30 gr.**

HOW TO PREPARE



1



Mask and tape the areas you don't want to cork spray, it's also important to wear goggles and gloves.

2



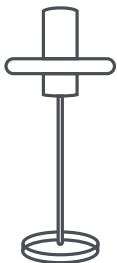
Open the Cork Elite Pro bucket, remove the protective bag, and pour the cork into the bucket. Empty the ink into the same bucket.

3



Add a small amount of water to the ink container to dissolve all the pigment, then pour the contents into the bucket where the cork was previously placed. (approximately 500 ml of water is added, depending on the temperature or the mix)

4

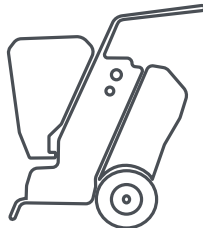


Mix the product thoroughly using a professional mixer.

Mix it in vertical and circular motions until all the content is homogeneous for 10 to 15 minutes.

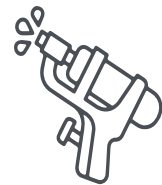
Let the mixture rest for 5 minutes.

5



Transfer the mixture into the container of your spray machine.

6

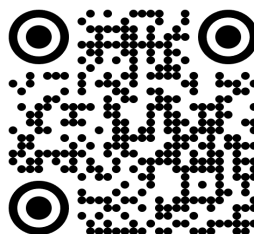


Apply 2 coats of Cork Spray onto the desired surface. The first coat should be applied from approximately 2 feet away. After it has dried, apply the second coat from approximately 3 feet away.

Tutorials



On our YouTube channel, you can find tutorials, ranging from the surface preparation process, the best materials for preparation, as well as the tools we recommend.



Tools

We recommend using:

- Professional Mixer
- Graco RTX 5000 PX
- Spray Gun with a 4 or 6 nozzle size.

Visit our website at <https://corkelite.com> for more information.

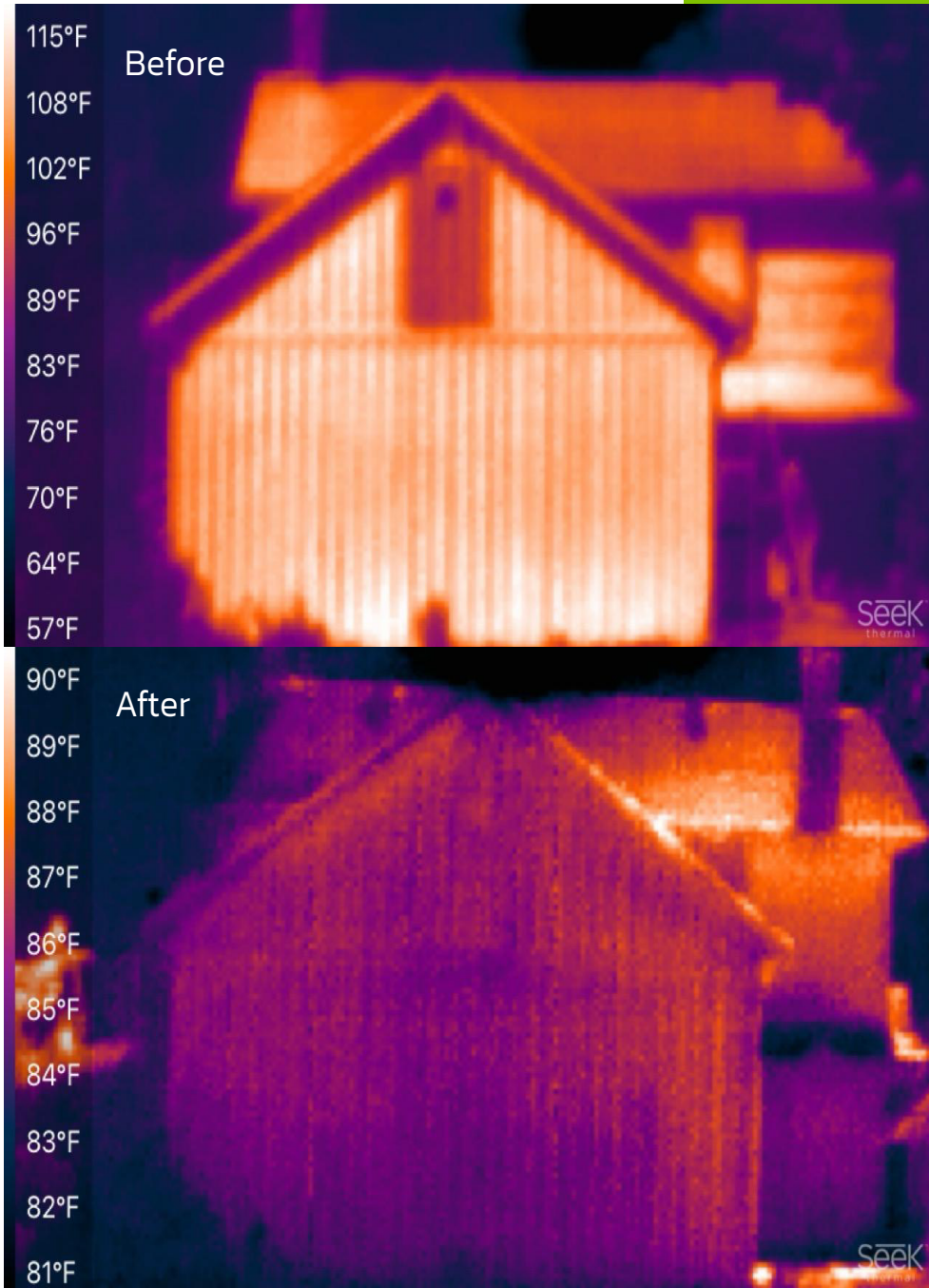


TECHNICAL DATA AND TEST

	TESTING REGULATIONS	RESULTS
Specific gravity	EN-ISO 2811-1:2016	0.5 - 0.7 g/cm ³
Grain size	EN-ISO 1524 / UNE EN 1062-1	0.5 - 0.8 mm / S1 Fine
Adhesion resistance by pull-out test	EN-ISO 1524:2000	≥ 1.9 N/mm ²
Thermal conductivity	UNE-EN 12667	0.075 W/m. °C
Resistance to artificial weathering	EN-ISO 16474-1:2014	No change 3200 h
Tensile strength and elongation at break	EN-ISO 527-4	0.3 Mpa
Cross-section	EN-ISO 2409	Gt0
Crack bridging capacity	EN 1062-3:2008	A1 (-20°C)
Thermal compatibility (freeze-thaw cycle)	EN 13687-5	≥ 0.8 N/mm ² "No bubbles and cracks"
Impact resistance	EN-ISO 6272-1:2012	W < 0.1 Kg/m ² h0.5
Capillary absorption and water permeability	EN 1062-3:2008	30 minutes At room temperature 20°C
Water vapor permeability	EN ISO 7783-1(-2)	Sd < 5m Class I
Permeability to CO₂	EN 1062-6	Sd > 50 m
Hazardous substances	EN 16516:2018	Complies with 5.3
Dry to touch (hours)	UNE 48301:1999	4 - 5
Second coat (hours)	UNE 48301:1999	24
Coverage (m²/L)	UNE 48282:2017	1.8 - 2 Kg/m ²
Volatile Organic Compounds (VOC)	UNE EN ISO 17895	Complies with 5.3
Sound absorption	EN ISO 354:2004	aw - 0.10



We are Manufactures US & Canada



**THERMAL
PAINT**



The Thermal Line consists of four water-based, single-component products designed to provide superior thermal insulation for various construction projects. These products utilize a patented technology that enhances thermal performance, reduces pigment usage by 50%, and minimizes color wear on exteriors. They are engineered for maximum technical efficiency, offering significant energy savings and environmental benefits.

The new technology features a patented formula that ensures exclusive thermal insulation and maximum performance. Extensive testing has been conducted to validate the performance of these products. Tests include heating tests by IR radiation, reflectance tests using UV spectrophotometry, and simulated solar radiation warming tests. These tests demonstrate the superior performance of the new technology coating compared to standard coatings.

INTERIOR THERMAL PAINT

Interior Thermal Paint is a plastic paint with a matte finish, offering high coverage and exceptional whiteness at 98%. It is formulated with top-quality styrene-acrylic resins, pigments, fillers, and additives.

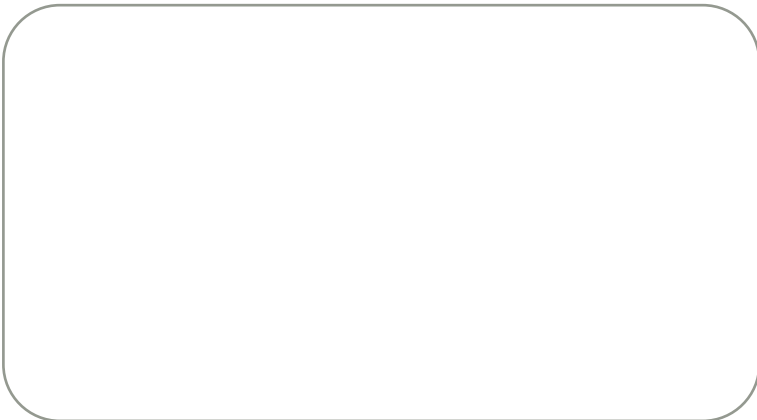
	CHARACTERISTICS
Coverage	88-110 m² (947-1184 ft²) per 22 kg (48.5 lbs) / 15 liters container
Container	22 kg (48.5 lbs) / 15 liters
Finish	Matte
Whiteness	98%
Usage	Ideal for interior surfaces needing high coverage and a flawless matte finish.



EXTERIOR THERMAL PAINT

Exterior Thermal Paint is a professional-grade outdoor coating based on siloxanes and acrylic resin in aqueous emulsion. It features a matte finish with high resistance, specifically prepared for both new and old construction surfaces.

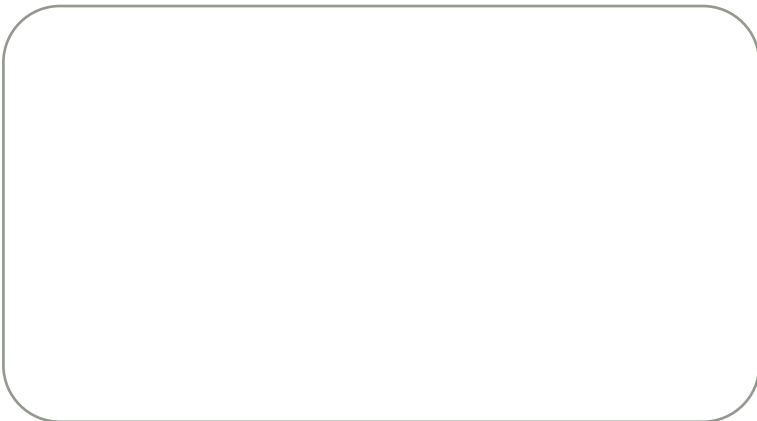
	CHARACTERISTICS
Coverage	73.33–88 m² (790–947 ft²) per 22 kg (48.5 lbs) / 15 liters container
Container	22 kg (48.5 lbs) / 15 liters
Finish	Matte
Whiteness and Opacity	96%
Usage	Suitable for exterior surfaces requiring high resistance to weathering.



THERMAL-WATER PROOF SKIN

Thermal-Water Proof Skin is a thermal waterproof membrane formulated with acrylic emulsions, free of organic solvents and bituminous products. It has good elasticity, forming a protective film above 5°C, designed primarily for vertical surfaces.

	CHARACTERISTICS
Coverage	51.43 m² (554 ft²) per 18 kg (39.7 lbs) / 15 liters container
Container	18 kg (39.7 lbs) / 15 liters
Finish	Matte
Usage	Best for vertical exterior surfaces that need high coverage and resistance to wear and weather.



THERMAL-WATER PROOF TOP

Thermal-Water Proof Top is a thermal waterproof membrane similar to Thermal-Water Proof Skin but tailored for horizontal surfaces. It is also based on acrylic emulsions without organic solvents and bituminous products, ensuring good elasticity and wear resistance.

	CHARACTERISTICS
Coverage	9 m² (97 ft²) per 18 kg (39.7 lbs) / 15 liters container
Container	18 kg (39.7 lbs) / 15 liters
Water Vapor Permeability	Class II
Waterproof	Class III
Usage	Ideal for horizontal exterior surfaces that require high durability and effective waterproofing. A fireproof version is available for enhanced safety.



UNIVERSAL PRIMER

The Universal Primer is a water-based primer sealer and consolidator. It is formulated with an acrylic emulsion, free from organic solvents and bituminous products. This primer offers low water absorption and forms a protective surface film, making it suitable for a variety of substrates. It is perfect for getting surfaces ready for spray cork. It helps seal and strengthen surfaces, making them smoother and better prepared for the next layer.

	CHARACTERISTICS
Density	~1.00 g/cc
Dry to Touch	1 hour
Frost Stability	Good
Re-paint Time	12 hours
External Resistance	UV-resistant and aliphatic
Adherence	Good
Finish	Glossy, depending on application
Recommended Thickness	50 µm
Performance	Approximately 100 g/sqm or 0.02 lb/ft², varies with substrate

CORK ELITE PRO
CONTACT US

3901 E Plano Pkwy, Plano, TX 75074, **US**
184 Oakdale Road, North York, ON M3N 1V9, **CANADA**

+1 647 575 4480
carlos@corkelite.com

